

Workforce Today

From the Peel-Halton-Dufferin Training Board

SPECIAL ISSUE NEWSLETTER

Inside this Issue:

Immigration Trends

Growth of Immigrants

Period of Immigration

Highlights for the Peel-Halton Area

- In 2006, PH had a significantly higher proportion of immigrants within its population than Ontario and Canada (42.1% vs. 28.3% & 19.8%, respectively).
- Between 2001 & 2006, the immigrant population in PH grew by 31.7%.
- 19.6% of PH's immigrants had arrived between 2001 and 2006.
- "Many Canadian organizations and industries will face critical talent shortages in the next decade. Due to the imminent retirement of the baby boom generation, and the smaller size of subsequent generations, there will soon be too few qualified people to fill all of the positions vacated by departing mature employees." (Conference Board of Canada, 2006)

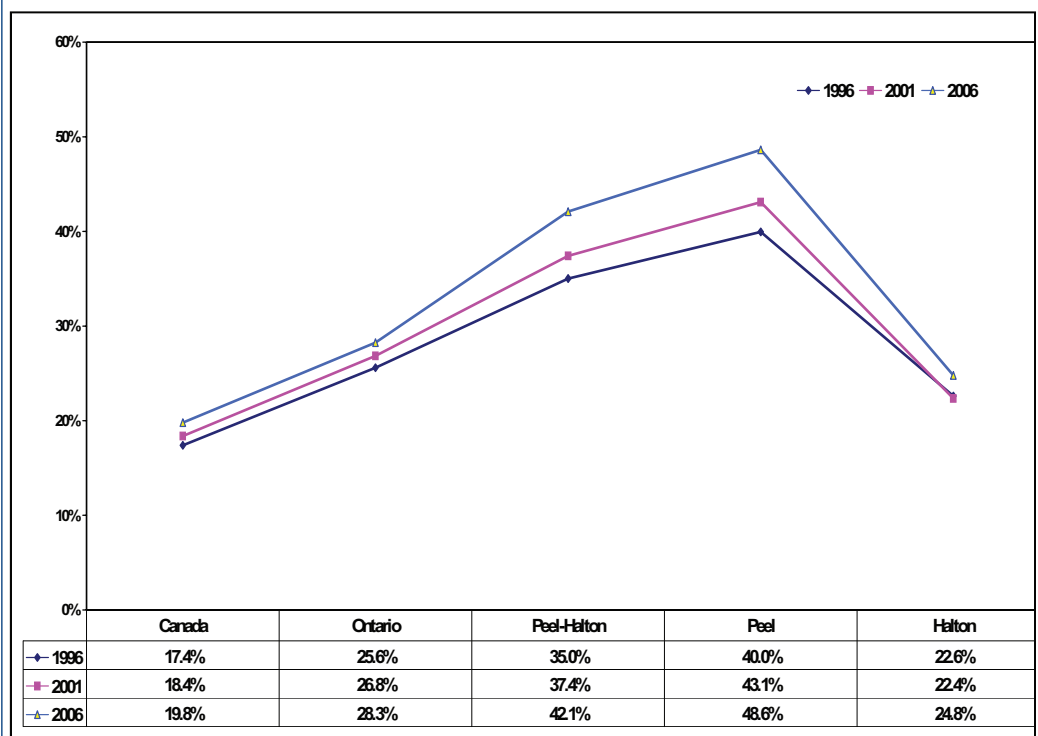
Implications for Human Services Sector

- Increased demand for culturally appropriate services for the immigrant population.

Immigration Trends In The Peel-Halton Area

Peel-Halton (PH) has a very high level of ethnic diversity in its population. Immigrants are an increasing source of labour. At the national level, a report from the Standing Committee for Citizenship and Immigration speaks to the need for immigrants to assist in filling the serious skill shortages in Canadian labour markets.* This newsletter provides information on the immigration trends in the Peel Halton (PH) area by using official data from the 1996, 2001 & 2006 Census. According to Statistics Canada, immigrant refers to people who are, or have been, landed immigrants in Canada. A landed immigrant is a person who has been granted the right to live in Canada permanently by immigration authorities. Some immigrants have resided in Canada for a number of years, while others have arrived recently. Most immigrants are born outside Canada, but a small number were born in Canada. For more information about immigration, please visit the Statistics Canada 2006 Census dictionary available at: <http://www12.statcan.ca/english/census06/reference/dictionary/pop047.cfm>.

FIGURE 1. IMMIGRANTS**: CANADA, ONTARIO, PH, PEEL & HALTON, 1996-2006



* Government Response to the Report of the Standing Committee on Citizenship and Immigration, November 2002.

**Immigrants as a percent of total population.
Source: Statistics Canada, Census 2006.

For more information please contact:
Peel Halton Dufferin Training Board at:
33 City Centre Drive, Suite 545, Mississauga, ON L5B 2N5
Tel : 905-306-9588
E-mail: info@phdtrain.com, Website: www.phdtrain.com



Peel - Halton - Dufferin
Training Board

La Commission de formation
de la main-d'oeuvre de
Peel-Halton-Dufferin

Did you know?

What proportion of the total immigrants in Canada lives in the Peel- Halton (PH) area?

10.8% of Canada's immigrants lives in the Peel-Halton area.

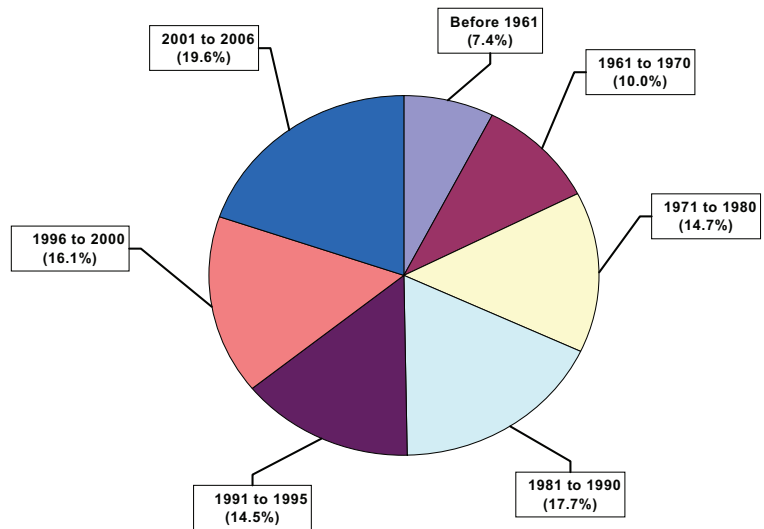
How many immigrants live in the Peel-Halton (PH) area?

669,160 immigrants; 42.1% of the Peel- Halton population.

What was the rate of growth of immigrants in PH between 2001 & 2006?

Between 2001 & 2006, the immigrant population in PH grew by 31.7% (compared to 12.2% in Ontario & 13.6% in Canada).

FIGURE 2. IMMIGRANTS BY PERIOD OF IMMIGRATION: PH, 2006 (TOTAL IMMIGRANTS=669,160)



**TABLE 1. GROWTH OF THE IMMIGRANT POPULATION*:
CANADA, ONTARIO, PH, PEEL REGION, HALTON REGION & PH'S MUNICIPALITIES, 2001-2006**

Region	2001		2006		Rate of Change 2001-2006	
	#	%	#	%	#	%
Canada	5,448,480	18.4%	6,186,950	19.8%	738,470	13.6%
Ontario	3,030,075	26.8%	3,398,725	28.3%	368,650	12.2%
Peel - Halton	508,070	37.4%	669,160	42.1%	161,090	31.7%
Peel Regional Municipality	424,820	43.1%	561,240	48.6%	136,420	32.1%
<i>Mississauga City</i>	285,650	46.8%	343,245	51.6%	57,595	20.2%
<i>Brampton City</i>	129,285	39.9%	206,185	47.8%	76,900	59.5%
<i>Caledon Town</i>	9,890	19.6%	11,805	20.8%	1,915	19.4%
Halton Regional Municipality	83,250	22.4%	107,920	24.8%	24,670	29.6%
<i>Oakville Town</i>	39,610	27.6%	50,250	30.5%	10,640	26.9%
<i>Burlington City</i>	31,285	20.9%	36,280	22.3%	4,995	16.0%
<i>Milton Town</i>	4,945	15.9%	13,030	24.4%	8,085	163.5%
<i>Halton Hills Town</i>	7,405	15.4%	8,360	15.2%	955	12.9%

*Note: The immigrant population as a percent of total population.

Source: Statistics Canada, Census 2006.

**EMPLOYMENT
ONTARIO**

Ontario's employment & training network

The views expressed in this document do not necessarily reflect those of the Government of Canada or the Government of Ontario.